

ELEVENTH JUDICIAL CRIMINAL MENTAL HEALTH PROJECT CRISIS OUTPLACEMENT BEDS

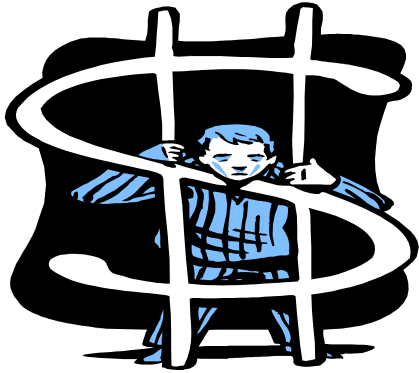
Miami-Dade County, Florida



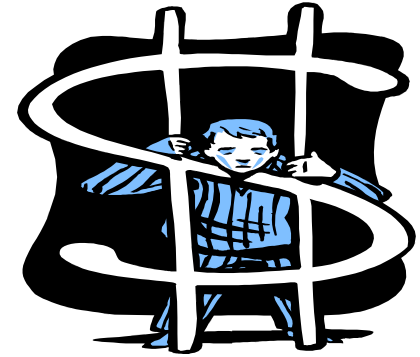
Jail Diversion Programs



Designed and implemented to divert people with serious mental illnesses away from the criminal justice system into community-based treatment and services



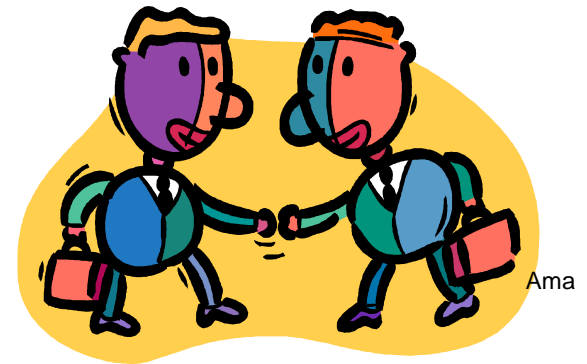
FACTS



- **There are 800-1400 detainees that experience mental illness on any given day at the Miami-Dade County jail.**
- **This represents approximately 30% of the total inmate population and costs taxpayers millions of dollars annually to manage this population in jail.**
- **Persons with mental illnesses stay in jail 8 times longer than those individuals without mental illness at a cost of 7 times more.**

Cross System Collaboration

- Judges
- The Court
- Public Defender
- State Attorney
- Law Enforcement
- Consumers and Families
- Department of Corrections
- Mental Health Providers
- Social Security
- Foundations
- DCF



Pre-Booking



Crisis Intervention Team (CIT)

CIT officers receive special training to respond to crisis calls involving persons with suspected mental illness. When appropriate, CIT officers transport individuals with mental illness to community mental health facilities for evaluation, treatment, and referrals instead of making an arrest.

Pre-Booking



- **36 of 36 police departments participate in CIT training.**
- **More than 4,700 officers training since 2003**
- **More than 1,200 CIT officers on duty throughout Miami-Dade County**

Candidates for Diversion

- Misdemeanors
- 2nd & 3rd degree felonies
- No more than three prior felony convictions
- More serious past or present legal involvement considered by SAO.



Cost Savings

Jail

\$175 per inmate per
day



Jail Diversion

Less than **\$50** per
day



Crises Outplacement Beds

- **Housing**
- **Case Management (SOAR)**
- **Health Services**
 - **Primary Care**
 - **Behavioral Case Management**
- **Peer Support**
- **Weekly Treatment Team Meetings**



“I’m coming to understand the gifts I’ve been given, I know I serve a purpose. (The program) allows me to sit down, slow down and build my foundation.”

Performance

Outcomes

- **76% decrease in jail bookings**
- **90% reduction in jail days (1-year pre- vs. post)**
- **33% recidivism (typically 75-80%)**

New Measures

- **60% to access PH**
- **70% will not return to the CoC for housing assistance within 1-year**



For Additional Information

Victoria L. Mallette
Executive Director
Miami-Dade County Homeless Trust
vmallette@miamidade.gov

