

The Beginning of the End: Knowing When to Close a Case and End Assistance



BEN CATTELL NOLL
PROJECT COORDINATOR
BNOLL@FRIENDSHIPPLACE.ORG
202-306-6524



Case Studies: To Exit or Not to Exit?



**FRIEND-
SHIP
PLACE**

Albert has been living in his car for the past 18 months. You have shown him 2 apartments and a room for rent, but he didn't like any of them and declined to move in.

He frequently goes missing for weeks at a time and reports that he is out looking for work wherever he can find it and needs to earn money wherever he can. Albert likes to drink, and you suspect that he is actually going on binges.

You've sent numerous job fair flyers to Albert but he hasn't attended any of them. He is approaching a mandatory 90-day review period where you must decide whether to recertify him or discharge him from the program. What do you do?



**FRIEND-
SHIP
PLACE**

Juanita worked her way through an associate's degree while living in the shelter. Two weeks after starting to work with your program she found a job working as an administrative assistant at a local nonprofit where she makes \$1300/month and identified and moved into a one-bedroom apartment at \$900/month with utilities included.

Juanita is concerned because her position is funded by a grant that only lasts for 18 months. She is uncomfortable with her rent burden and thinks she could make more money if she went back to school. Her job does not provide comprehensive benefits and she is in need of health insurance. You have provided her with the information to apply for Medicaid but she has not done it yet and is unsure if she wants to access public benefits any more.

Juanita has only received two of the 6 months of rental assistance she is eligible for. Is Juanita a good candidate to consider for closing or should you continue to provide services?

A blue circular logo with the text "FRIENDSHIP PLACE" in white, bold, uppercase letters. The logo is positioned in the bottom right corner of the page, partially overlapping the purple footer bar.

**FRIEND-
SHIP
PLACE**

Common Pitfalls in Closing Cases



“Non-Compliance”

*Loss of
Contact*

*No Progress
Towards Goals*

*Wait for
Certain Stability*

*“What will they
do without me?”*

*Still have
Eligibility*



**FRIEND-
SHIP
PLACE**

Towards a Philosophy of “Participant-Centered Case Closing”



- Does this decision primarily benefit the interests of the participant or the needs of program?
- Does this decision serve to end homelessness?
- Will this decision terminate services to an individual who may benefit from their provision?
- Does this decision serve to end homelessness?
- Does this decision promote self-efficacy or foster dependency?
- Does this decision serve to end homelessness?



Better Practices



**FRIEND-
SHIP
PLACE**

Clarity in Program Scope



- Ending ***poverty*** or ending ***homelessness***?
- What is the intended length of participation?
 - What alternative supports are available?
- “Does this sound like something you want?”



**FRIEND-
SHIP
PLACE**

Transparency in Decision-Making



- Written policies and procedures are available to staff *and* participants
- **When** do you assess whether to close a case or continue providing assistance?
- **Who** is involved in the decision-making and how is it communicated to the participant?
- **What** are the key indicators you assess to make this determination?

A circular logo with a teal background and white text. The text is arranged in three lines: 'FRIEND-', 'SHIP', and 'PLACE'. The logo is located in the bottom right corner of the slide.

FRIEND-
SHIP
PLACE

Three Potential Case Closing Indicators



- Ratio of income to rent/living costs
- Housing in good standing
 - Is the rent paid?
 - Is the household compliant with lease conditions?
- Connections to community resources and supports
 - Has the person connected with needed supports?
 - How are those supports working out?



Case Studies: To Exit or Not to Exit?



**FRIEND-
SHIP
PLACE**

Randall has been working with your program for nine months. He was initially very engaged with program services and was moved into permanent housing after only a two-month housing search process. His level of engagement took a downturn a few months ago, however, and it has been a challenge to get him to respond to phone calls or meet with his case manager.

Randall's only income is the \$733 he gets from SSI. Rent for his 1-bedroom apartment is \$800/month. He reported to the case manager at intake that he wanted to work, but several months of working with the local employment services department has not led to any job offers.

Randall's landlord has reported that he is a very good tenant and has been a good neighbor but is concerned that Randall will not be able to pay the rent after his time in the program is complete. You have just paid the final month of rent for which Randall is eligible. What is the next step in working with him?

**FRIEND-
SHIP
PLACE**

Joyce moved in to housing last month after a lengthy six month search. She suffers from PTSD after a significant traumatic experience while serving in the Army. You assisted her with applying for a service-connected disability and she is now receiving just over \$1800/month to support herself and her 6-year-old son.

Joyce's previous eviction and poor credit made locating suitable housing difficult, but you were able to work with a landlord sympathetic to the program to work around the screening barriers. Unfortunately, Joyce has refused to pay her initial portion of the shared rent this month (total rent is \$900, she is expected to pay half while in the program) and several neighbors have complained to the landlord about the volume at which she watches TV in the house.

You have encouraged Joyce to seek out counseling services through the VA to address her PTSD, but she has not gone. How would you move forward in a participant-centered way with Joyce?



**FRIEND-
SHIP
PLACE**

Exit Planning from Day 1



- **Hit the ground running!**
 - Small case loads to allow for intensive services
- **SMART Goals**
 - What will success look like
 - How will we know when we have arrived?
 - What will happen when we arrive?



**FRIEND-
SHIP
PLACE**

...and Days 2, 3, 4, 5...



- Regular check-in on progress towards goals
 - Are these still your goals to obtain housing stability?
- Identify supportive resources in the community
 - Help with troubleshooting and making connections (CTI model)
 - What's "Plan B" if these don't work out?

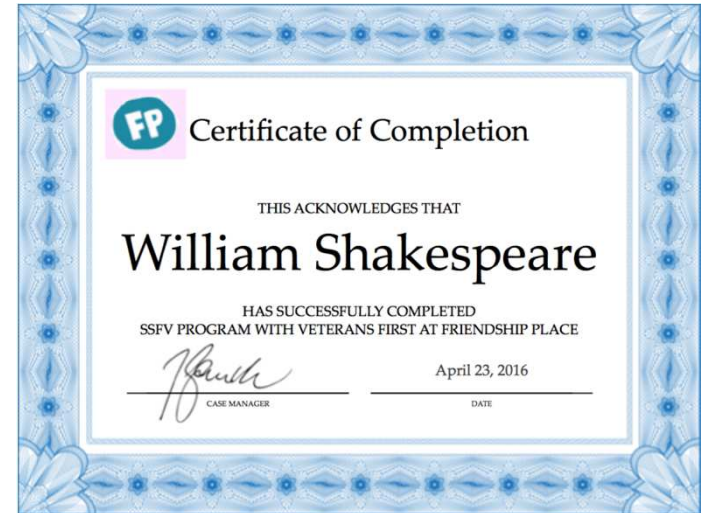


Saying “Goodbye” Effectively



- **Be Kind**

- Prepare participants for exit in advance and talk through concerns
- Empowerment
 - ✦ Example: Graduation certificate



- **Be Clear**

- What can you expect from us in the future?
- Who can you call if you are in need of help?

- **What if participant doesn't feel ready?**

- Opportunity for strengths-based conversation!



Participant Centered Case Closing



- Program exits are based on participants having met their needs and achieved their goals related to obtaining and maintaining housing stability
 - Program rules or eligibility requirements are not the *primary* factor in whether a case is continued or closed
 - Strong, clear and transparent policies and procedures
 - Awareness that we cannot predict future success
 - If you are not the best resource to resolve someone's homelessness, you do your best to bridge the gap and connect them to the most appropriate available resource before exiting (i.e.- “warm transfer”)



YOUR Case Studies and Questions: To Exit or Not to Exit?



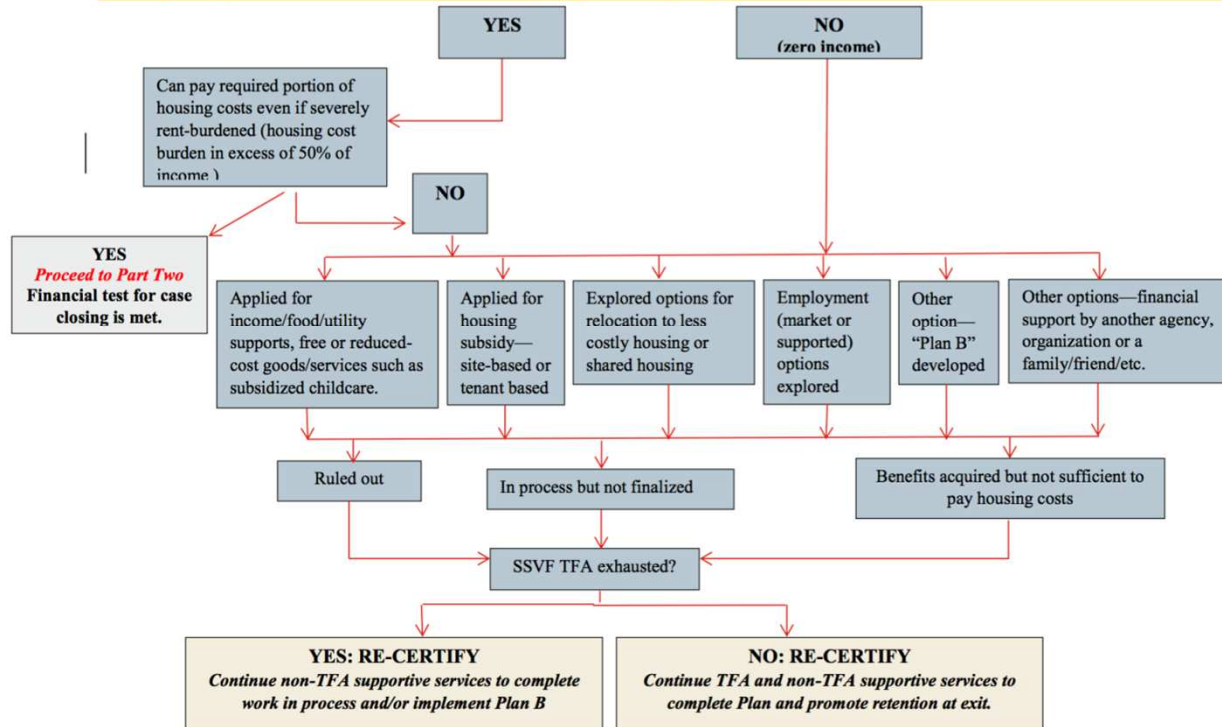
Tools



SSVF Case Closing Flow Chart

Part One: Financial

Does participant/HH have an income or ongoing subsidy to pay rent?



Tools



SSVF Case Closing Indicators

Deciding Whether to Continue Assistance/Recertify the Household or Close the SSVF Case

TRIGGER/STATUS CHANGE and/or SCHEDULED REVIEW	INDICATOR(S) FOR CONTINUATION OF ASSISTANCE / RECERTIFICATION	INDICATOR(S) FOR CASE CLOSURE
<p>90-day recertification process must include income and “But For” review (REQUIRED)</p> <ul style="list-style-type: none"> • <i>Less than 50% AMI</i> • <i>No resources</i> • <i>No support system</i> 	<p>Review verifies that household income does not exceed eligibility requirements and household has insufficient housing options, resources or support systems and would become literally homeless (i.e., require emergency shelter) if case is closed. Without continued support, a housing crisis is imminent.</p>	<p>Review identifies alternative housing options, resources and support systems that would prevent literal homelessness and/or household income is above eligibility maximum.</p>
<p>Program staff contacts landlord for update on tenancy status of program participant</p>	<ul style="list-style-type: none"> • Landlord indicates the household is in violation of their lease, the subject of significant complaint(s) and/or has rental arrears • Landlord was promised longer-term landlord/tenancy supports and program can only offer these supports if case remains open (<i>note</i>: case may remain open for landlord/tenancy supports) 	<ul style="list-style-type: none"> • Landlord reports tenant is in good standing—not in violation of lease or subject of significant complaint(s) or in arrears • Mutually-agreed level of landlord and/or tenancy supports, if promised, can be continued even after case closure



Tools



OrgCode Excellence in Housing Effective Exit Planning Worksheet

EXCELLENCE IN HOUSING

Exit Planning

Client:	Version:	Date:
---------	----------	-------

About Us

Family Name:	
Head(s) of Household:	
Address:	
Health Insurance	

Emergency/Medical Contacts

Role/Relationship	Name	Telephone Number
Emergency	Emergency Services	9-1-1
1.		
2.		
3.		



Thank You!!!



Ben Cattell Noll
Project Coordinator
bnoll@friendshipplace.org
202-306-6524

