

Improving Accuracy and Validity in the 2017 Unsheltered PIT Count

November 15, 2016



National Alliance to
END HOMELESSNESS



The National Alliance to End Homelessness (Alliance) is a leading national voice on the issue of homelessness. To accomplish its mission of ending homelessness, the Alliance uses data and research to identify the nature of, and solutions to, the problem. It analyzes policy to determine how best to advance these solutions. And, it helps build the capacity of communities to implement strategies that help them end homelessness.

The Homelessness Research Institute (HRI), the research and education arm of the National Alliance to End Homelessness, works to end homelessness by building and disseminating knowledge. The goals of HRI are to build the intellectual capital around solutions to homelessness; to advance data and research to ensure policymakers, practitioners, and the caring public have the best information about trends in homelessness and emerging solutions; and to engage the media to promote the proliferation of solid data and information on homelessness.

Agenda

1. Presentation by Brian Roccapriore

Connecticut Coalition to End Homelessness

2. Presentation by Claudia Powell

University of Arizona-Southwest Institute for Research on Women

3. Questions

Important HUD Exchange Resources

HUD Notice (CPD-16-060) on 2017 HIC and PIT data collection

<https://www.hudexchange.info/resource/5110/notice-cpd-16-060-2017-hic-and-pit-data-collection-for-coc-and-esg-programs/>

(webinar posting from last week TBD)

****Methodology Guide****

<https://www.hudexchange.info/resource/4036/point-in-time-count-methodology-guide/>

Tools for survey design, data extrapolation, and planning

<https://www.hudexchange.info/resource/4433/point-in-time-count-implementation-tools/>

[NEW] Resources for counting youth, relevant contacts

<https://www.hudexchange.info/programs/hdx/guides/pit-hic/#resources-for-counting-specific-populations>

Prior webinars in this series

Planning for the 2017 Unsheltered PIT Count

<http://www.endhomelessness.org/library/entry/webinar-planning-for-the-2017-unsheltered-pit-count>

Counting Youth in the 2017 Unsheltered PIT Count

<http://www.endhomelessness.org/library/entry/webinar-counting-youth-in-the-2017-unsheltered-pit-count>

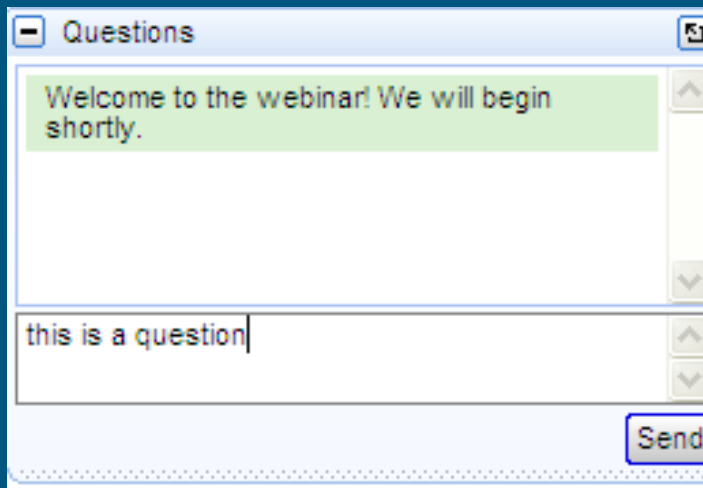
Send us your questions!

If you have questions during the webinar, submit them in the question box on your control panel. We will answer as many questions as possible at the end of the webinar.

Lines are muted to facilitate this call.

A recording of this webinar will be posted online at:

www.endhomelessness.org



A screenshot of a web-based 'Questions' control panel. The window has a title bar with a minus sign, the word 'Questions', and a maximize button. Inside, there is a green message box at the top that says 'Welcome to the webinar! We will begin shortly.' Below this is a large white text area. At the bottom of the text area, the text 'this is a question' is entered. To the right of the text area are vertical scroll bars. At the bottom right of the window is a blue 'Send' button.

Questions?

A recording of this webinar will be available at:
www.endhomelessness.org

Connecticut: 2017 Unsheltered Count

November 15, 2016

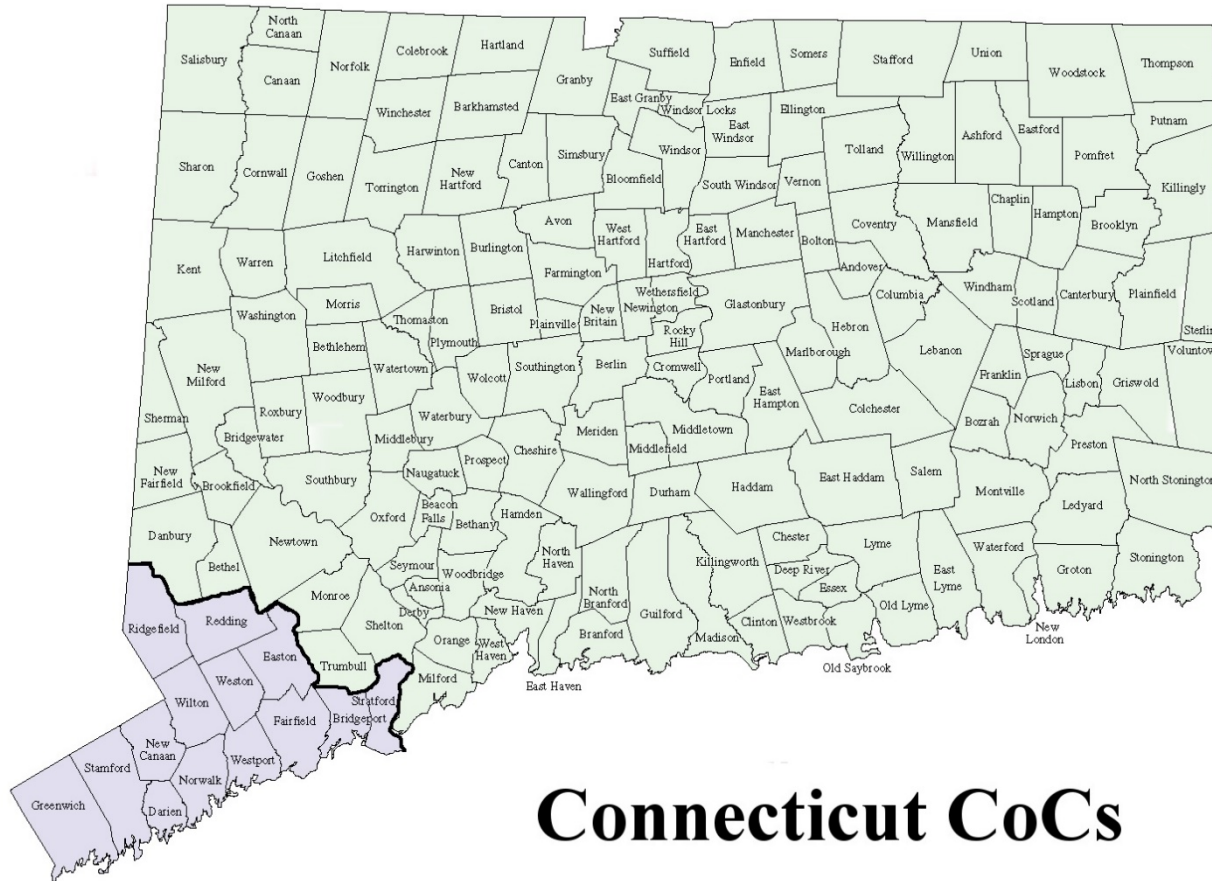
Brian Roccapriore

Director of HMIS & Strategic Analysis

CT Coalition to End Homelessness

www.cceh.org

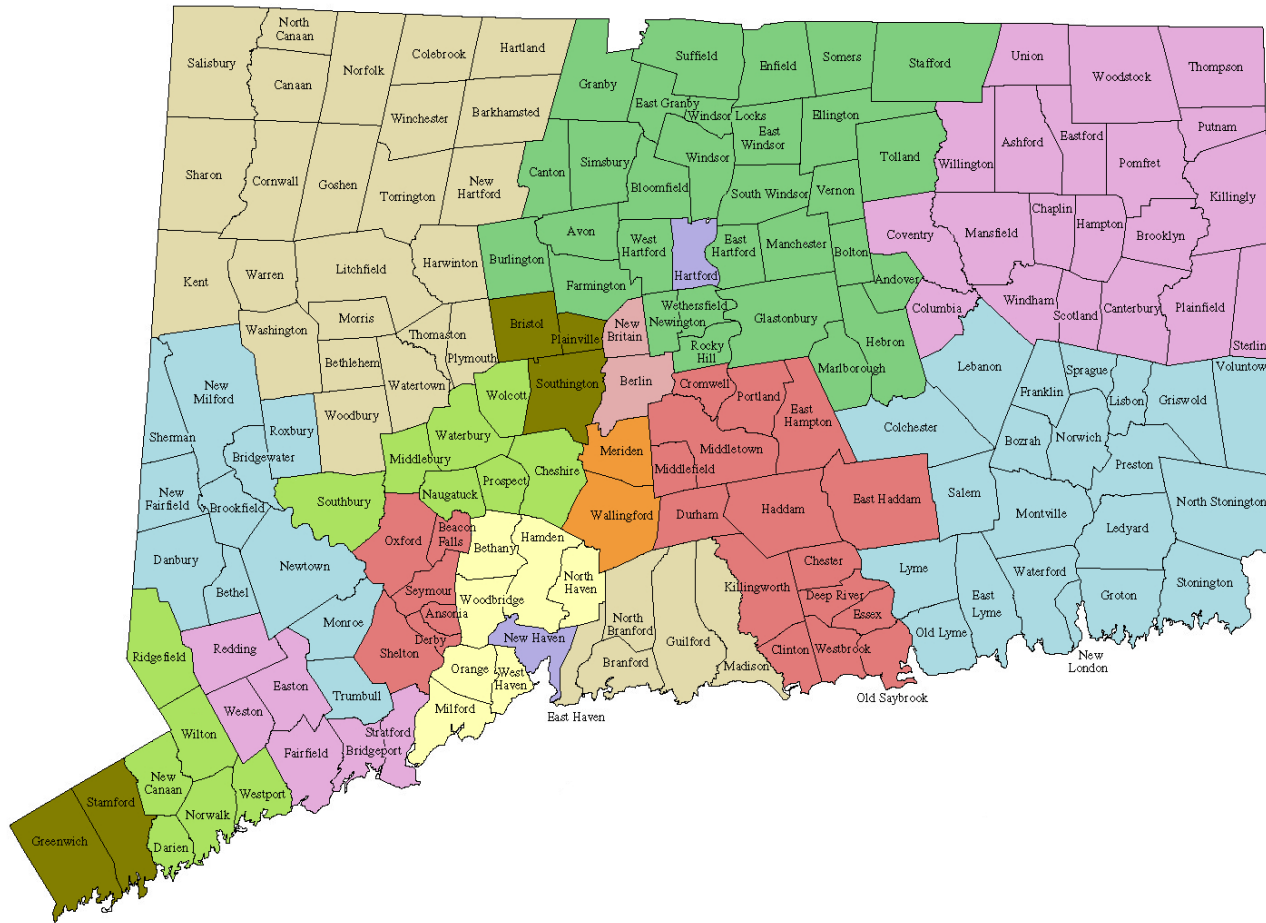
Background



Connecticut CoCs

Think Change • Be Change • Lead Change

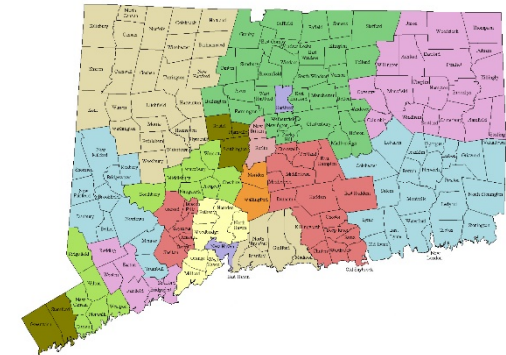
Background



Think Change • Be Change • Lead Change

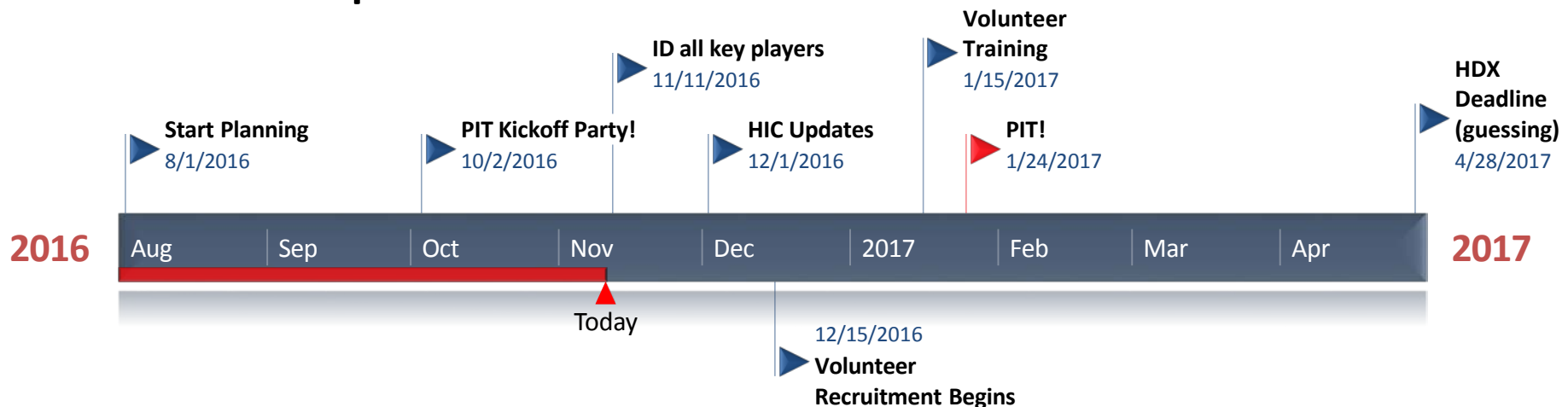
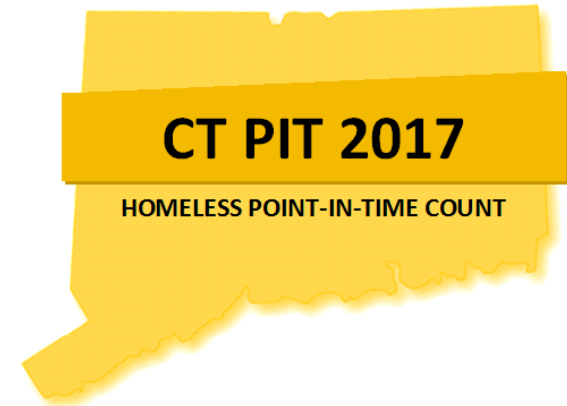
CT PIT Coordination

- CCEH is the state lead
- Regional Coordinators
- Project Contacts
- Volunteers



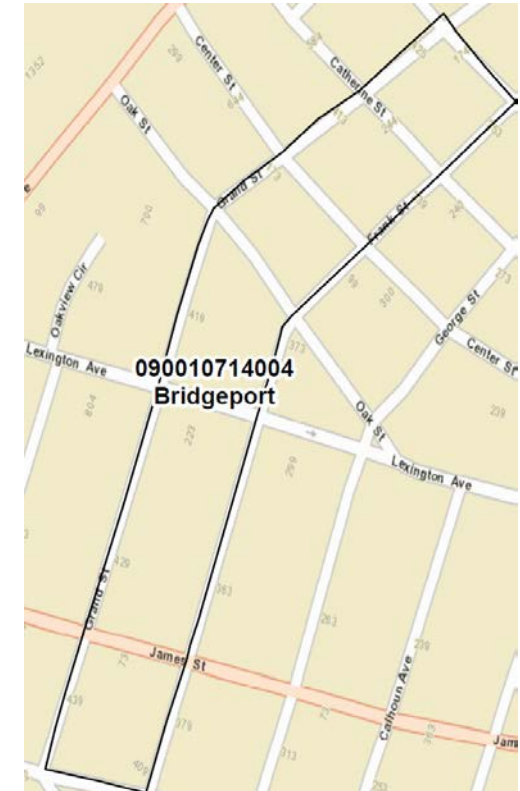
CT PIT Methodology

- CT PIT History
- Use of Contractors for unsheltered methodology and extrapolation



CT PIT Methodology

- Census Blocks
 - Designated Areas (high probability)
 - Sample Areas (low probability)
- Extrapolation



Technology!

2016: First time using a mobile app

2017: Mobile app is mandated



Want to steal our stuff? Please do.



- <http://cceh.org/pit/data-and-reports/>
 - Full methodology for sheltered and unsheltered counts are here – and more data tables than you will ever want.

Contact:

Brian M. Roccapriore
broccapriore@cceh.org
(860) 721-7876 x 110

EVERYONE COUNTS!

PIMA COUNTY POINT IN TIME COUNT



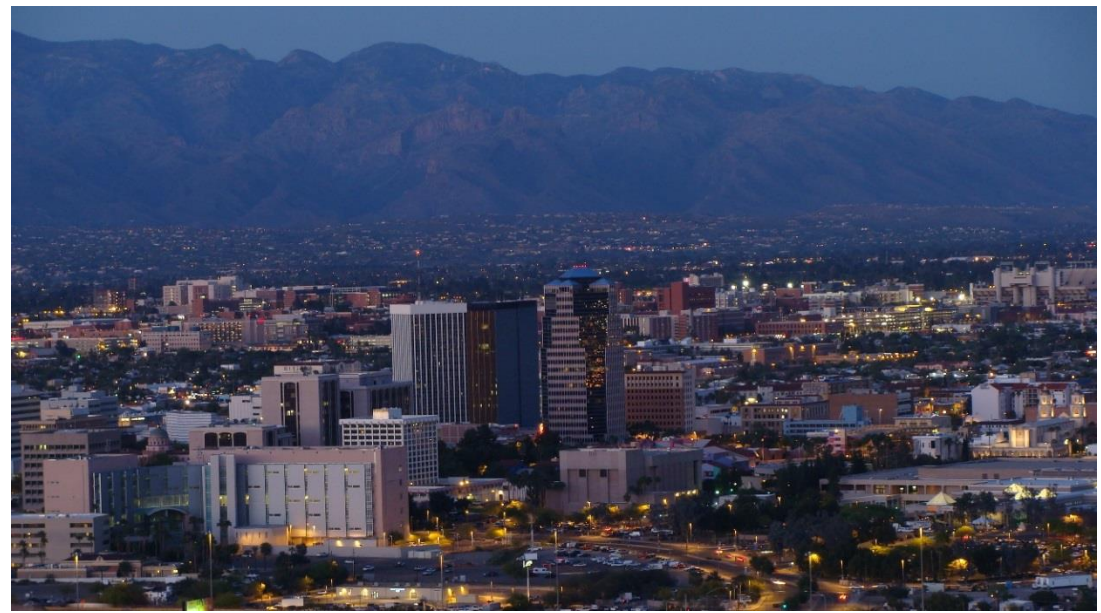
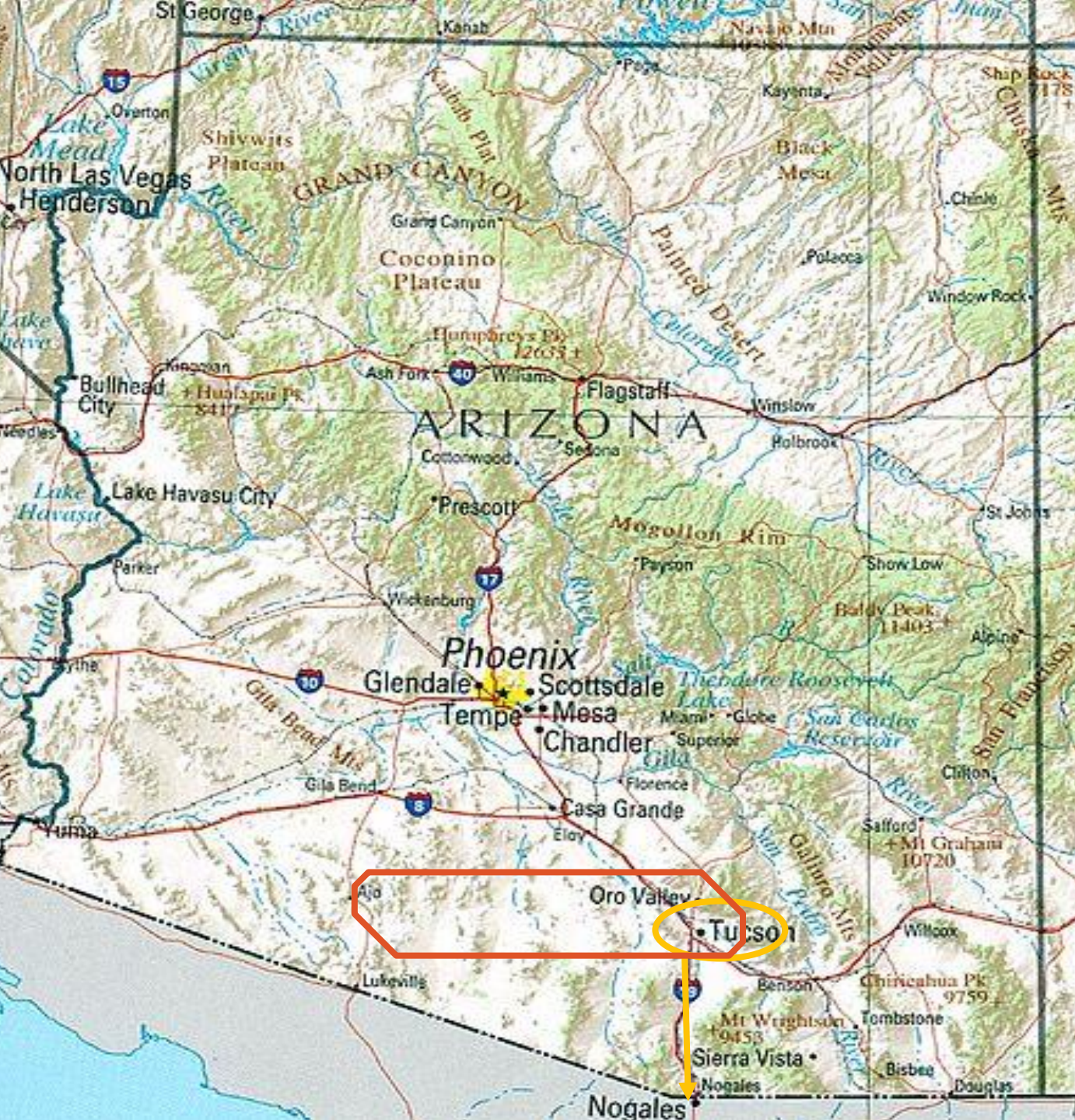
Claudia Powell, University of Arizona-Southwest Institute for Research on Women

Presented at: National Alliance to End Homelessness Improving Accuracy and Validity in the 2017 Unsheltered PIT Count Webinar, November 15, 2016

PRESENTATION OVERVIEW

- Pima County
- Mixed-Method Approach
 - Census
 - Sampling
- PIT Count Overview
- Connecting with the Community
- PIT Count Trainings
- Day of the Count
- What happens after the count?
- Next Steps
- Questions





WHAT TUCSON PIMA COLLABORATION TO END HOMELESSNESS (TPCH) CONTINUUM OF CARE (COC) UNDERSTOOD...

- Count in urban, rural and desert areas
 - Different strategy for each of these areas
- Engage multiple community partners
- Engage more volunteers
- Generate excitement around the PIT count



Pima County
Arizona

- Library
- Police Agency
- Health Facility
- Hospital
- Major Streets
- Railroad
- Pima County Boundary
- County Boundaries
- Major Wash



MIXED-METHOD APPROACH

- Urban Area (Census Count)
- Outlying Areas and Youth (Event)
- County Wide (Sampling)



CENSUS COUNT



- Deploy about 30 teams of 4-10 people across Metro Tucson
- Cover the entirety of the designated assigned sector in groups of at least 2
- Engage all people who appear to have slept in a place not meant for habitation the night before and ask them to complete a survey

Pima County Homeless Survey

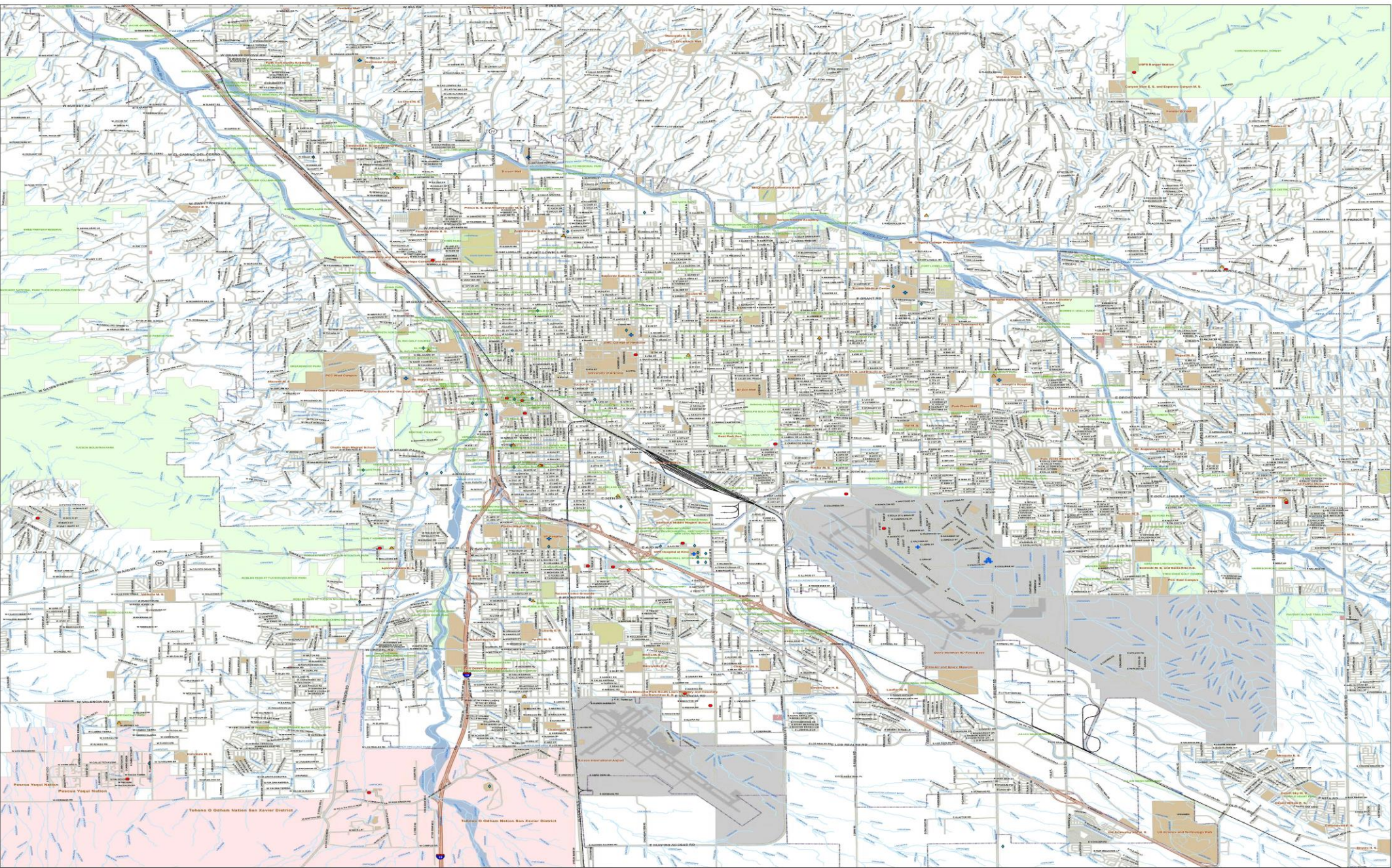
Base Map

- ▲ Library
- Police Agency
- Health Facility
- Hospital
- Railroad
- Secondary Washes
- Parks
- Major Washes



December 5, 2014

\\gislib\development\cdnc\mxd\2014\All_Base.mxd FM



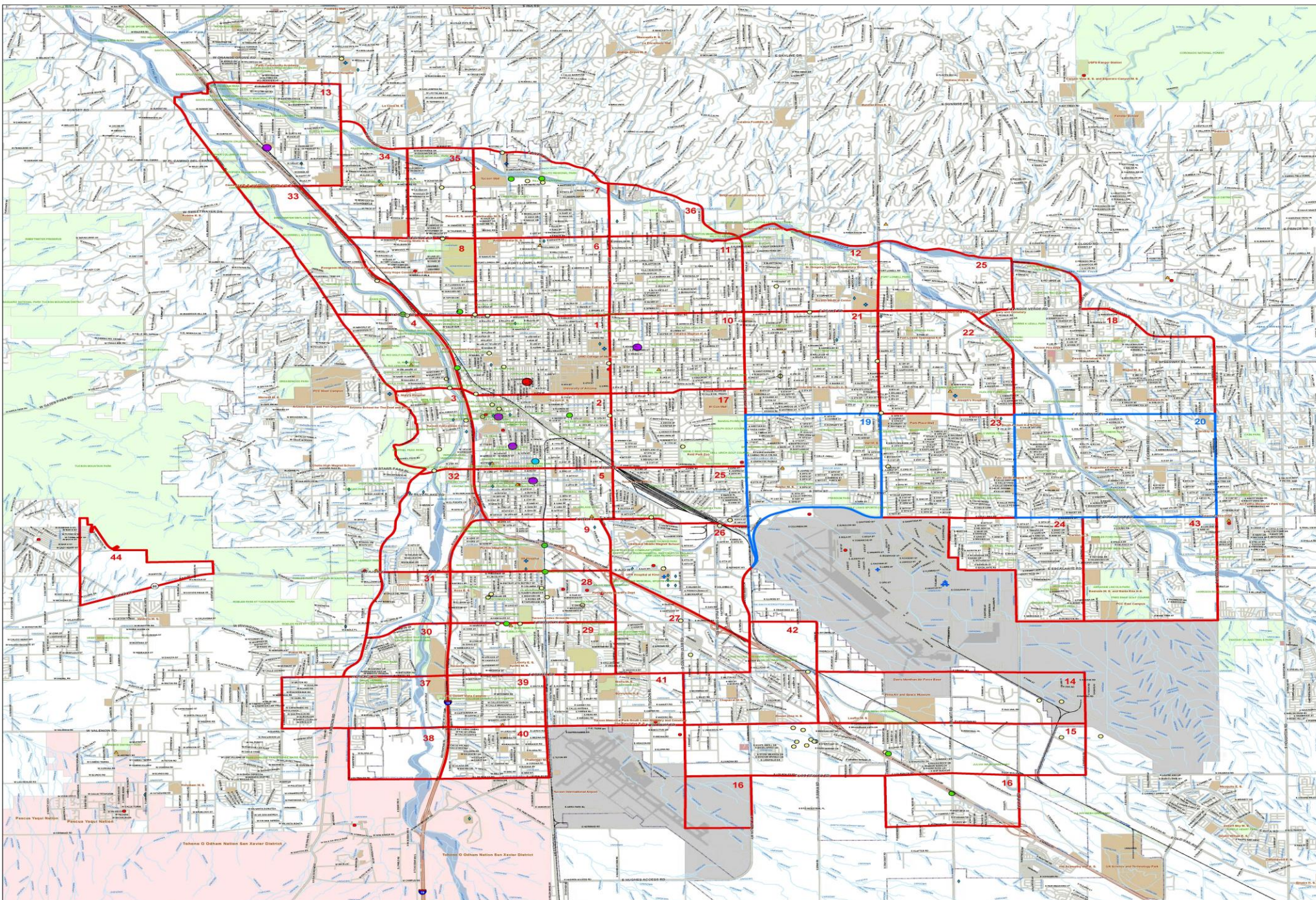
Pima County Homeless Survey Locations

All Areas

- 1 - 2
- 3 - 5
- 6 - 9
- 10 - 26
- 27 - 113
- Tier 1 Boundary
- Tier 2 Boundary
- Library
- Police Agency
- Health Facility
- Hospital
- Railroad
- Secondary Washes
- Parks
- Major Washes



1 0.5 1 Miles



EVENTS

- Outlying Areas
 - Social Service Providers
 - Food Banks
 - Libraries
- Youth
 - Different time of day
 - Resources Available
 - Include people with different types of housing instability

SAMPLING

- Utilized a Pima County map with equally sized sectors
- Eliminated all areas known to be:
 - National Parks
 - Inaccessible by car
 - Tribal Lands
- Randomly selected 25% of areas to visit and conduct a count
- Results of those areas are applied to other desert areas



© 2005 Blackwell Publishing Ltd *Journal of Internal Medicine* 258: 103–111



- PARKS:**
- ARTHUR BUCK REGIONAL PARK
 - CANADA DEL ORO RIVER PARK
 - CATALINA REGIONAL PARK
 - CATALINA STATE PARK
 - CONTINENTAL RESERVE COMMUNITY PARK
 - CORONADO NATIONAL FOREST
 - IRONWOOD FOREST NATIONAL MONUMENT
 - ORIGINAL PINE CACTUS NATIONAL MONUMENT
 - PANTANO RIVERS PARK
 - PICTURE ROCKS PARK
 - RIQUITO REGIONAL PARK
 - SAHUARO NATIONAL PARK
 - SAHUARO NATIONAL PARK PINCON MOUNTAIN DISTRICT
 - SAHUARO NATIONAL PARK TUCSON MOUNTAIN DISTRICT
 - SAHULITA DISTRICT PARK
 - SANTA CRUZ RIVER PARK
 - SMITH-TWATER PRESERVE
 - TORTOISA PRESERVE



STREET COUNT OVERVIEW



PIT COUNT PLANNING AND ORGANIZATION

LEADERSHIP TEAM

- HMIS Lead Agency
- Collaborative Applicant
- HMIS Committee Chairperson
- Point in Time Count Leader

WORKGROUP

- Representatives from Community Based Agencies
- Faith Based Agencies
- People currently/formerly experiencing homelessness
- University partners

WORKGROUP TEAMS

- Training Team
- Outlying Areas Team
- Incentive Team
- Volunteer Coordination Team
- Youth Team
- Team Leader Lead*

CONNECTING WITH COMMUNITY

- Tap into networks of many providers
- Create excitement around the count
- Involve currently and formerly homeless people
- Use user-friendly volunteer sign-up sheet



TRAININGS

Offer trainings in multiple formats

Conduct separate team leader and community volunteer trainings

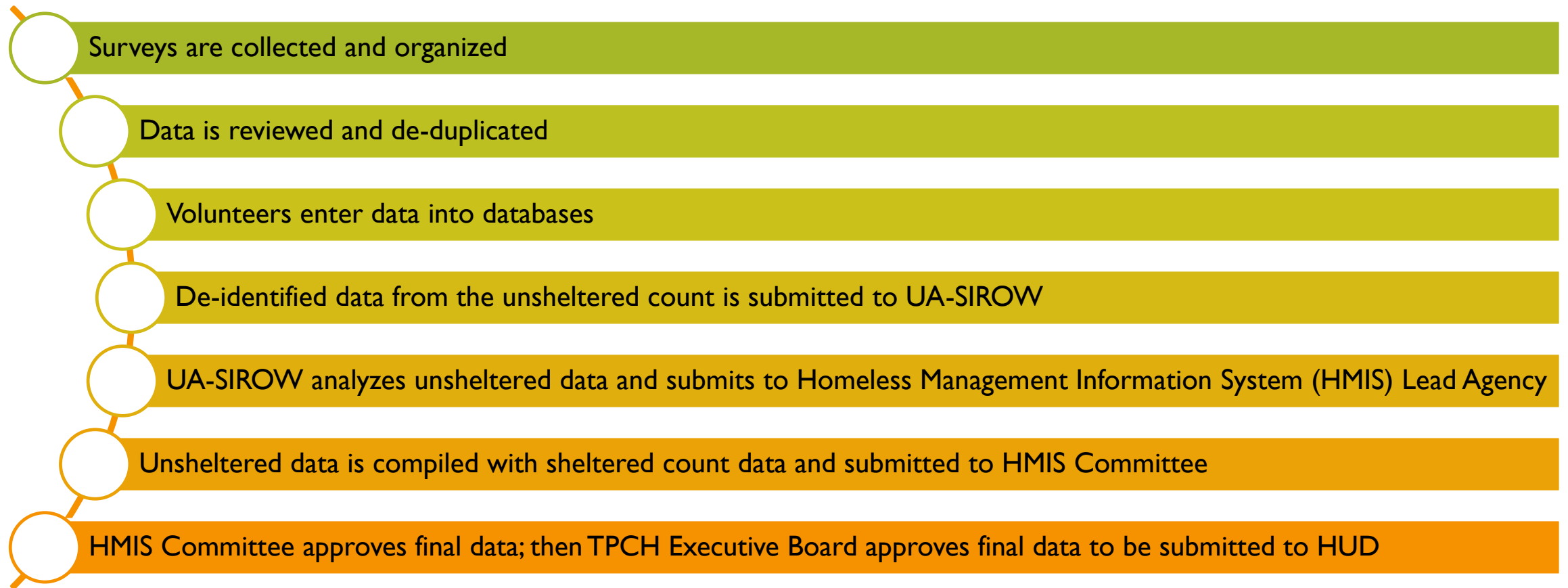
Opportune time to rally the community and thank volunteers

DAY OF THE COUNT

- Team leaders meet their team at a predetermined location in their sector (generally around 6:00)
- Teams interview people experiencing homelessness in their sector
 - Participants are given gift cards or clothing items for their time
- Surveys and additional materials are returned to head quarters



WHAT HAPPENS AFTER THE COUNT?



POST-COUNT WRAP-UP AND NEXT STEPS...

- Debrief Street Count
 - What went well; what could be improved
- Hold a community event to share data and thank volunteers
- Consider all sources of data to determine community priorities
- Begin planning 2018 Street Count
 - Review similar communities



QUESTIONS?

Contact Information:

Claudia Powell
Director of Evaluation Services
Research Scientist
University of Arizona
Southwest Institute for Research on Women
claudiap@email.arizona.edu

