

THURSDAY, JUNE 5; 3-4PM EST

Defending the Equal Access Rule:

*Supporting Vulnerable Clients &
Preserving Universal Protections*




ENDHOMELESSNESS.ORG

NATIONAL ALLIANCE TO END HOMELESSNESS STATEMENTS FOR PARTICIPATION


The Alliance works to ensure that diverse voices are welcomed and included as facilitators, attendees, and guests in all forums.




The organization has a zero-tolerance policy for any form of discrimination or abusive behavior. The Alliance is committed to ensuring that all its events are safe and respectful for all participants.



Participants acknowledge that any form of discrimination, violence, or abusive behavior may result in removal from all forums depending on the situation.



If any discrimination is witnessed or experienced during the webinar, or if you feel unsafe, please notify any member of the Alliance staff.



The National Alliance to End Homelessness strives to create a diverse, inclusive, accepting, and safe space for everyone.



National Alliance to
END HOMELESSNESS

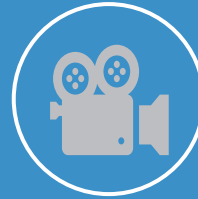
Housekeeping



Chat/Q&A
Box



PowerPoints



Webinar is
recorded



ENDHOMELESSNESS.ORG

The Context

CELEBRATING PRIDE MONTH

**PROTECTING AGAINST CONTINUED
ATTACKS ON TRANS & GENDER
EXPANSIVE COMMUNITIES**

**DISRUPTING PERSISTENT
DISPARITIES IN EXPERIENCES OF
HOMELESSNESS**

ENDHOMELESSNESS.ORG



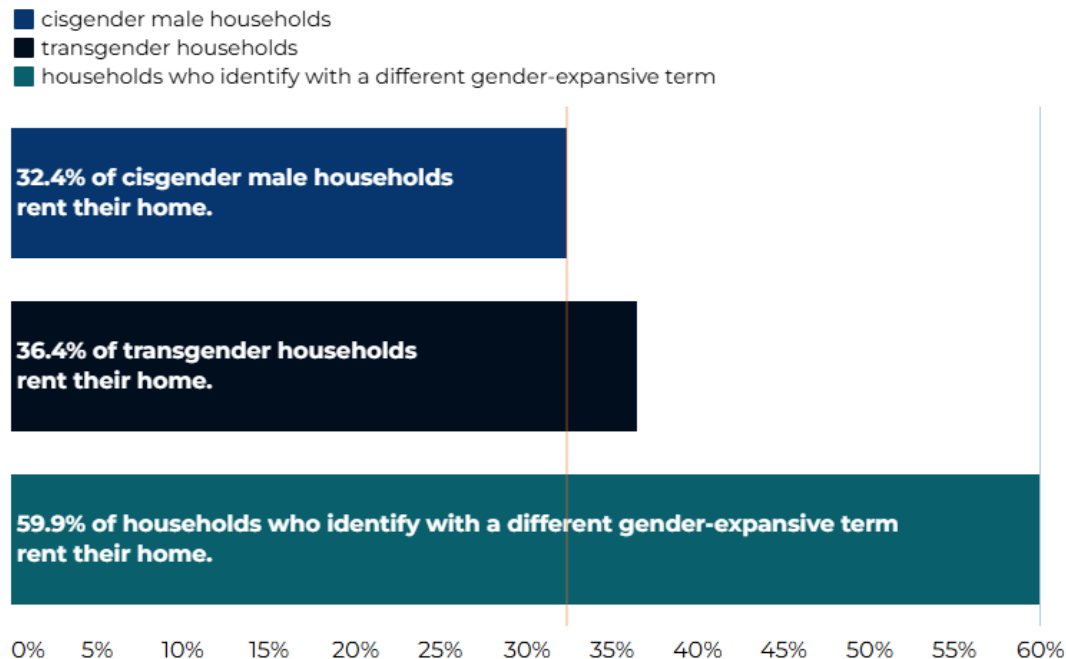
THE AMERICAN HOUSING SURVEY (AHS)



- **1973-1980:** data collected every year
- **1980-present:** Data collected every two years, most recently for the year 2023
- **2023:** sexual orientation and gender identity were collected for the first time
 - Cisgender male
 - Cisgender female
 - Transgender
 - Uses Another Term
 - Not reported

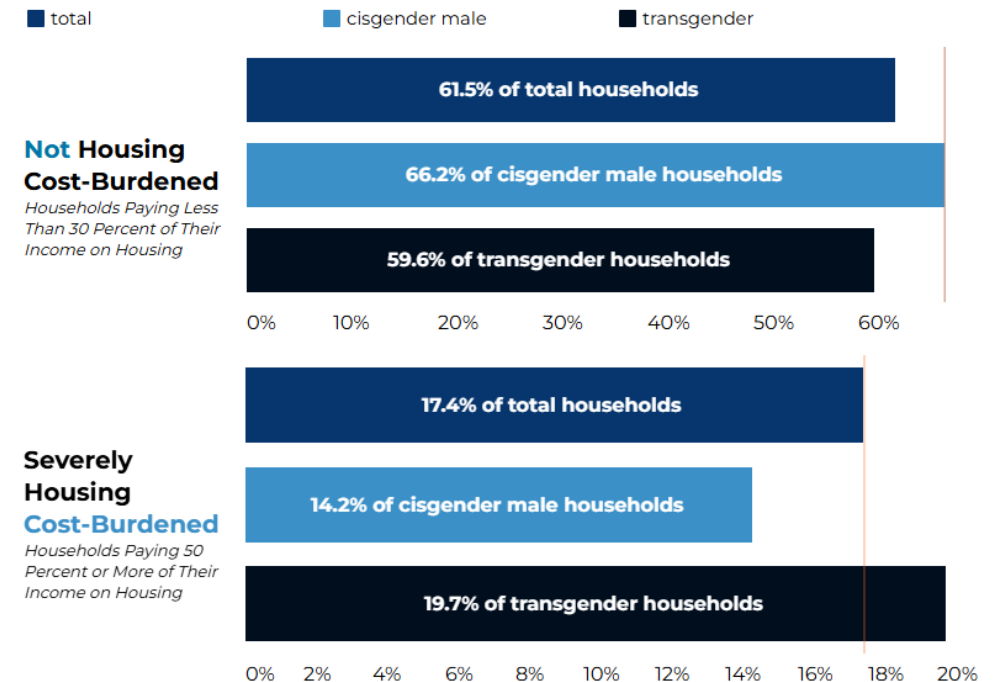
BARRIERS TO HOUSING

Gender-expansive people are **more likely to rent**



Source: United States Census Bureau, American Housing Survey (AHS) (accessed January 2025)
<https://www.census.gov/programs-surveys/ahs.html>

Transgender people are more likely to be **severely housing cost burdened**



Source: United States Census Bureau, American Housing Survey (AHS) (accessed January 2025)
<https://www.census.gov/programs-surveys/ahs.html>

Gender-expansive people of color are **even more likely** to rent and pay too much on housing

PERSISTENT DISCRIMINATION, EXCLUSION AND VIOLENCE REDUCES INCOMES AND INCREASE HOUSING INSECURITY

- Transgender adults are twice as likely as cisgender adults to be **unemployed** and are paid **32 percent less** for their work *(Fannie Mae, 2023; McKinsey & Company, 2021)*
- Numerous studies show higher rates of **discrimination in housing** – from landlords, family members, roommates and neighbors *(Glick et. al, 2019; the National Gay and Lesbian Task Force; Advocates for Transgender Equality)*
- **Discrimination** also elevates the need for mental health support – a life-saving health service that is extremely difficult to access without significant resources *(UCLA Williams Institute, 2022)*
- Intersectional discrimination based on **race** exacerbates these barriers and leads to higher rates of eviction *(UCLA Williams Institute, 2021)*
- Transgender people are **less likely** to be covered by **insurance** *(US Census Pulse Survey)*
- Disparities and challenges deepen during times of **economic uncertainty and crisis** – especially for gender-expansive people of color *(UCLA Williams Institute, 2021)*

THE POINT IN TIME COUNT



2024 Point in Time Count gender-expansive categories

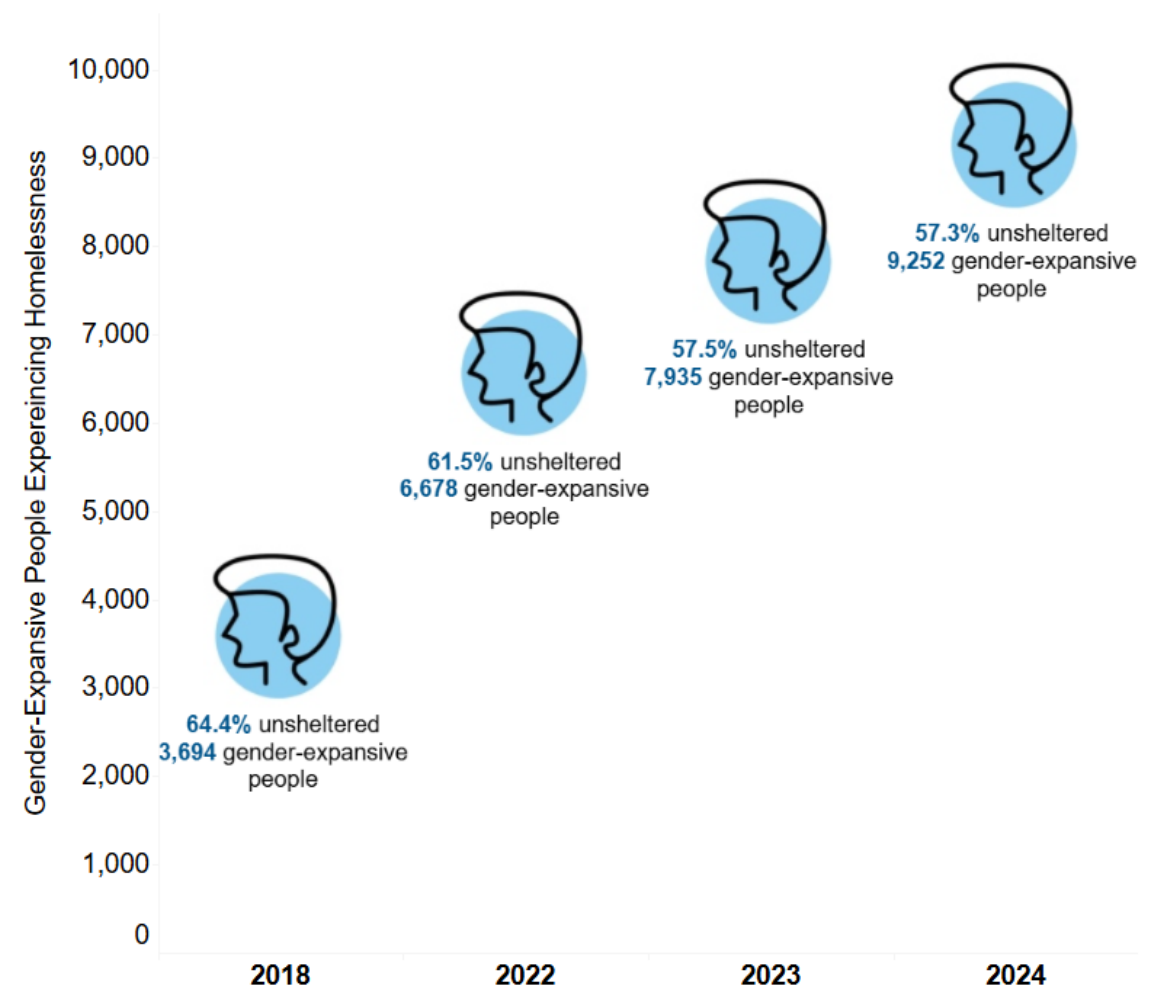
- Transgender
- Gender Questioning
- Culturally Specific Identity
- Different Identity
- Non Binary
- More Than One Gender



BARRIERS TO SHELTER

- **30 percent** of transgender people have experienced homelessness (*US Trans Survey 2023*)
- **Unsheltered** homelessness is nearly **twice as high** among gender-expansive people than it is among cisgender people (*HUD, 2024 AHAR Part 1*)
- **Culturally Specific** gender-expansive groups and **Gender-questioning** people are most likely to be unsheltered (*HUD, 2024 AHAR Part 1*)

More Gender-Expansive People Are Experiencing Homelessness



PRESERVING EXISTING FEDERAL PROTECTIONS

The Equal Access Rule



EQUAL ACCESS RULE

What is it?

ENDHOMELESSNESS.ORG

1. *Ensures that HUD's housing programs are available to all eligible individuals and families, regardless of family composition, sexual orientation, gender identity, or marital status.*
2. *Sets a standard definition of family that is self-defined by any group of people presenting for assistance, with or without children, and irrespective of age or relationship.*

EQUAL ACCESS RULE

The Federal Threat

ENDHOMELESSNESS.ORG

An Executive Order in January 2025 directed HUD to conduct rulemaking to rescind the “Equal Access in Accordance with an Individual’s Gender Identity in Community Planning and Development Programs” rule. HUD has now paused enforcement.

EQUAL ACCESS RULE

Current Status

ENDHOMELESSNESS.ORG

Importantly, the Equal Access Rule is still in effect, as the rescission of the rule is neither legal nor enforceable until HUD formally withdraws it via the rulemaking process.

EQUAL ACCESS RULE

Why it Matters

ENDHOMELESSNESS.ORG

- *Rule removal will exclude people from services.*
- *Rule removal will create red tape for providers.*
- *Rule removal will increase visible homelessness and strain local budgets.*

EQUAL ACCESS RULE

The DV Connection

ENDHOMELESSNESS.ORG

- *EAR + VAWA represent critical protections.*
- *DV field mobilized to defend the EAR in 2019.*
- *Discriminatory policies against any group or identity does **not** increase safety in shelter programs.*

WHEN WE FIGHT BACK, WE WIN!

66,000+

The number of public comments submitted during the last 60-day period in 2022, becoming the largest comment campaign on a HUD regulation ever.

Why Providers Believe in Protecting the Equal Access Rule

- *“When shelter admission is determined by the subjective determination of a person’s biological sex, all shelter applicants—biological women included—may be subject to additional questioning, scrutiny, and denial of services.” –Housing Authority*
- *“Intrusive questioning during entrance into a shelter will likely contribute to an increase in the numbers of unsheltered persons and perpetuate the cycles of poverty, homelessness, housing instability, and incarceration.” –Faith-Based Shelter Provider*
- *“People will literally die from having the “wrong” gender characteristics.” –Iowa Providers*

EDUCATE, MOBILIZE, ADVOCATE

Begin Community-Level Education

Gather Stories to Document Importance and Impact

Prepare to Submit a Public Comment

Stay Updated on Engaging Congress

Codify Protections in Your Community

EQUAL ACCESS RULE

Gather Stories!

ENDHOMELESSNESS.ORG

- *We need to show the human impact of the Administration's actions, and your story can help!*
- *Your story will only be made public if you grant permission to make it public.*

Q&A

- **PLEASE SHARE ANY QUESTIONS USING THE Q&A BOX.**
- **WE ALSO WELCOME YOU TO USE THE CHAT TO SHARE EXPERIENCES IN YOUR COMMUNITY –CHALLENGES, GLIMMERS (HOPEFUL NEWS), OR RESOURCES YOU WANT TO SHARE WITH THIS GROUP.**

Stay Connected!

- **THE SLIDES AND A RECORDING WILL BE SENT TO ALL PARTICIPANTS, AS WILL ALL RESOURCES MENTIONED DURING THIS PRESENTATION.**
- **EMAIL AVANDENBERG@NAEH.ORG WITH ANY QUESTIONS OR RESOURCES.**
- **SIGN UP FOR ACTION ALERTS TO STAY ENGAGED:**
[HTTPS://ENDHOMELESSNESS.ORG/ACTION/](https://endhomelessness.org/action/)
- **WHAT ACTION(S) CAN YOU TAKE THIS WEEK TO SUPPORT THE RULE?**