

The economy just doesn't work for a rapidly-growing number of Americans across urban, suburban, and rural communities alike. **Wages that do not keep up with the cost of living, a shortage of affordable housing, a broken healthcare system, and a weak social safety net force people out of their homes and into homelessness** every single week.

**7,251** people enter homelessness each year in Iowa.

## WITHIN IOWA:

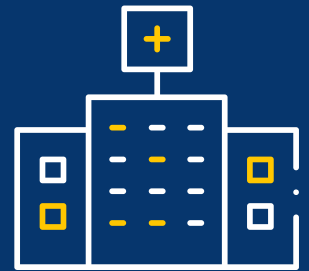
There are only **39** affordable rental homes for every 100 extremely low-income renter households.

Minimum wage earners must work **110** hours weekly to afford a two-bedroom rental home.



There are **426,000** people with unmet substance use treatment needs.

Mental health provider capacity meets only **19.5%** of estimated community need.



## Homelessness response systems are stuck between a rock and a hard place.

They have become the default safety net for every other system's shortcomings — and they're being stretched beyond their limits.

**3,672** people move into permanent housing each year in Iowa.

## WITHIN IOWA:



Emergency shelter capacity can only serve **76%** of individual adults experiencing homelessness.



Available permanent housing can serve only **7%** of people experiencing homelessness.

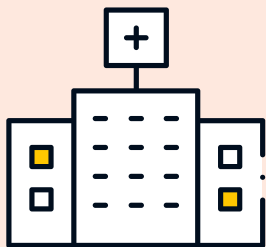
**Underfunding homelessness resources puts greater costs on other systems.** People experiencing homelessness are forced to stay in shelters and on the street for longer, growing sicker and more vulnerable.

WITHIN **THE UNITED STATES:**

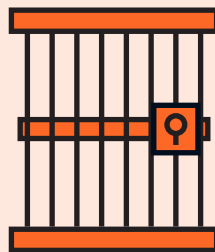
The national average length of stay in an emergency shelter increased from **77 to 92 days** between 2018 and 2023.



**Incarceration and hospitalization are far more expensive than investing in targeted interventions, especially housing paired with supportive services — and neither end homelessness.**



STATE HOSPITAL  
**\$750 – \$3000**  
PER PERSON



JAIL  
**\$115**  
PER PERSON



SUPPORTIVE HOUSING  
**\$72**  
PER PERSON

**COMMUNITIES CANNOT DO THIS ALONE.** Only Congress can deliver the investments needed to prevent people from falling into homelessness and help those experiencing it return to stable housing.

